

COLLAPAT® II

**Bone substitute biomaterial
with collagen and hydroxyapatite**

COLLAPAT® II is constituted of two of the main components of the human bone: a collagen matrix giving the haemostatic properties, (20%), dispersed ceramised hydroxyapatite micro granules giving the osteoconductivity, (80%).

The collagen is extracted from calf hides of US origin.

The manufacturing process follows recognized steps to inactivate viruses and non conventional transmissible agents such as prions.

These treatments ensure maximum microbiological safety, specifically regarding the BSE's responsible agents, thus complying to strict medical use requirements.

COLLAPAT® II is mouldable: due to its spongy structure, the product takes the consistency of a paste when in contact with blood or tissue fluids. This allows an optimal adaptation to the shape of the different bone surfaces and, in the case of bone defect filling, provides maximal settling, still avoiding an over boarding of the cavity.



In case of an infection, or as preventive action, COLLAPAT® II can be impregnated with an antibiotic and/or an anti-inflammatory solution.

Haemostasis

In the stomato-odontology surgery, thanks to its immediate haemostatic properties, COLLAPAT® II simplifies the surgery in one single act, even with a strong bleeding case; it avoids a previous haemostasis.

Benefits

COLLAPAT® II is osteoconductive:

It allows a quick regeneration tissue growth in the collagen field thanks to the hydroxyapatite micro-granules.



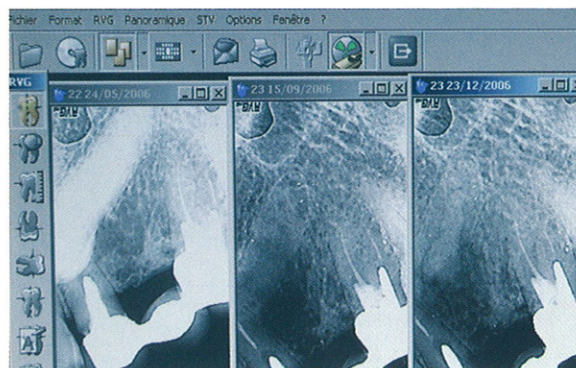
COLLAPAT® II can be impregnated with an antibiotic

solution* in case of septic bone infection.
*after being placed only.

COLLAPAT® II is composed of the two main constituents of the bone, i.e. Collagen and Hydroxyapatite.

COLLAPAT® II is haemostatic: Being applied in an haemorrhagic lesion, COLLAPAT® II stops the bleeding immediately.

The utilization of COLLAPAT® II avoids costly surgeries of autologous or allogenic transplantation.



Filling of an impacted canine tooth cavity after exeresis: pré-op, post-op and at 3 months

Utilization

COLLAPAT® II must be implanted in cavities in contact with live bone to enable a strong bone regeneration.

Presentation

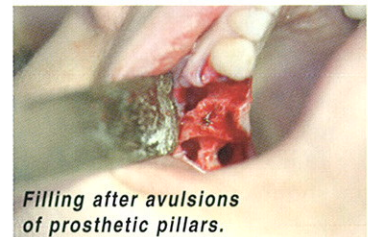
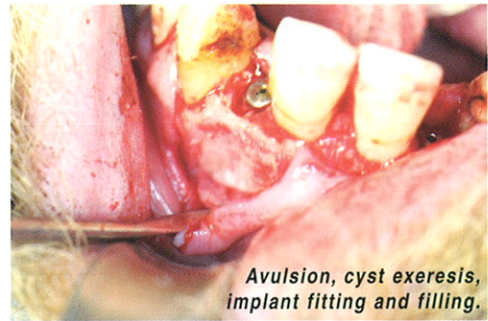
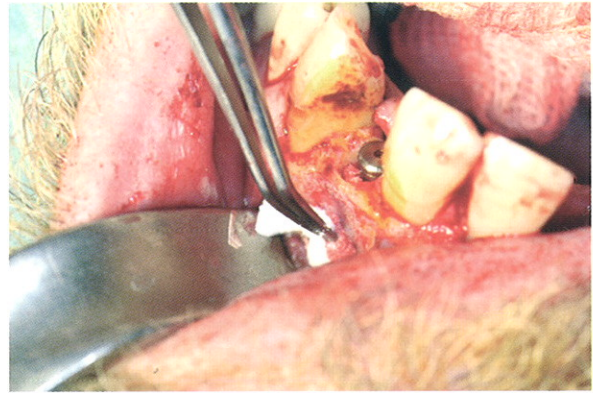
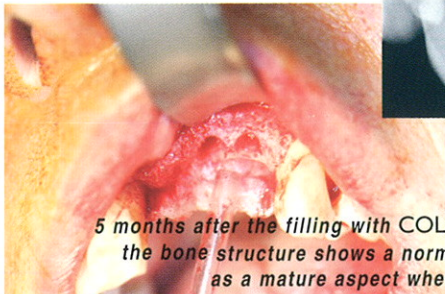
COLLAPAT® II is being used with success since 1981 in the Orthopaedic, Reconstructive and maxillo-facial Surgery, as well as in the Odonto-Stomatologic Surgery.

Aware of the needs of the Odonto-Stomatology practitioners, new appropriated sizes are now available.

They can be used in the different following cases:

- Wisdom tooth or impacted canine tooth exeresis,
- Dental-radiculo cyst exeresis,
- Paradentosis,
- Sinus bone filling,
- Bone stock Reconstruction :
 - due to an avulsion,
 - due to a traumatism,
 - due to a oncological pathology,
 - before the setting up of implants.

COLLAPAT® II can be used in any case where it is in contact with live bone.



Packaging

COLLAPAT® II exists in 3 sizes in order to respond to the needs of the different surgery specialties:

1 x 1 x 1 cm	cat # : PAT 1X1X1
3,5 x 6 x 0,6 cm	cat # : PAT 35X6
7 x 11 x 0,6 cm	cat # : PAT 7X11

COLLAPAT® II for dental use is presented , sterile in blind double packaging.

Each box contains 5 sterile (Bêta radiations) cubes (1 x 1 x 1cm), individually packed in double transparent sheets of PET/PE peel , and the external bag consists of two blind aluminium sheets.

COLLAPAT® II contains no LATEX.

Peremption and storage

COLLAPAT® II expires three years after the sterilization date, in its original packaging.

The expiring date is written on each different bag or packaging.

COLLAPAT® II should be kept at room temperature.

AXIADIS SAM

7 avenue Saint Roman
Parc Saint Roman
Tél. : +377 97 97 61 30
Fax : +377 97 97 61 31

Email : interlock@axiadis-sam.com

Manufactured by **SYMATESE**
biomatériaux